

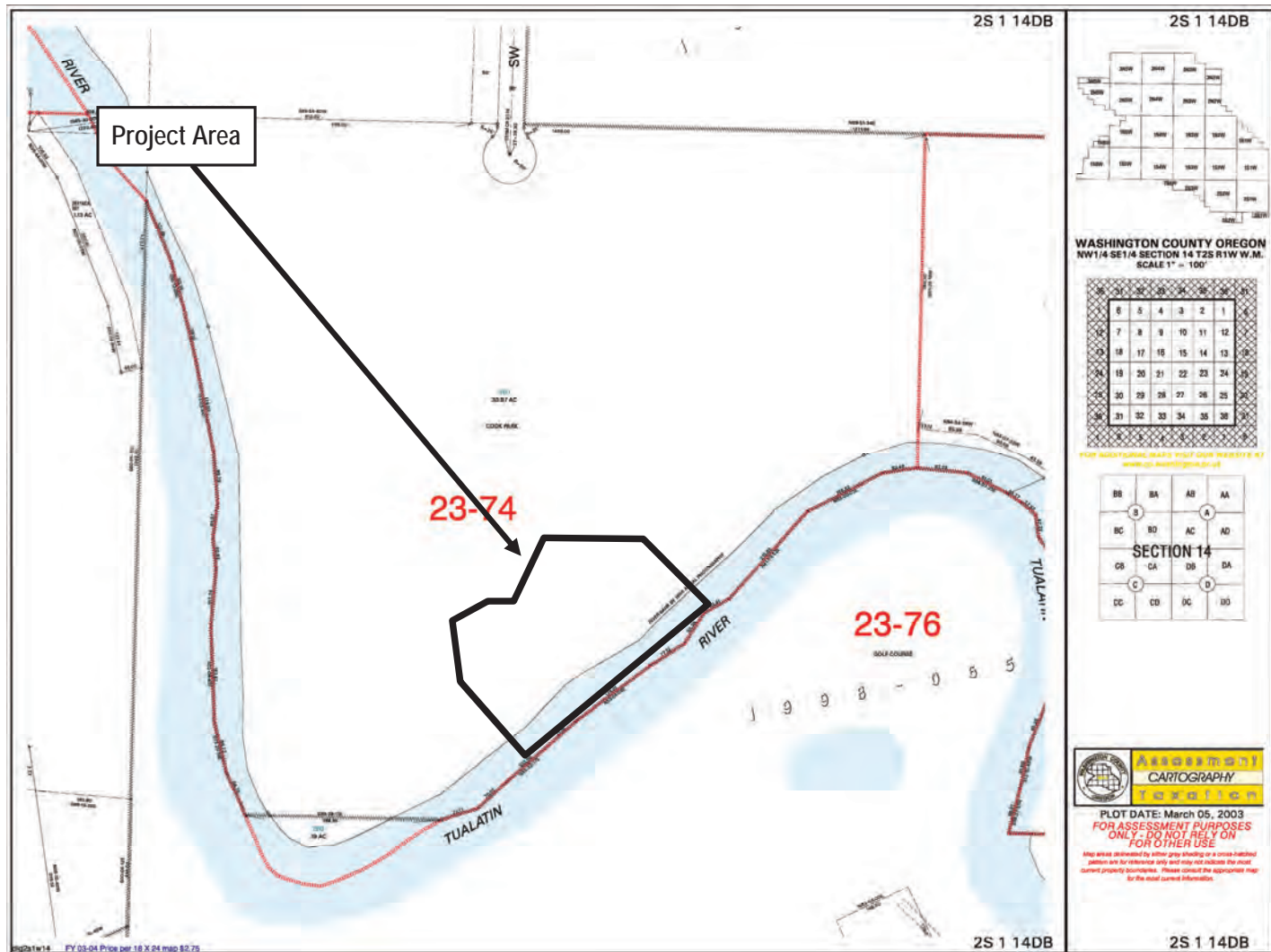
Project #7521  
4/20/2023



Pacific Habitat Services, Inc.  
9450 SW Commerce Circle, Suite 180  
Wilsonville, OR 97070

General Location and Topography  
Cook Park Accessible River Access and Boarding Dock Replacement - Tigard, Oregon  
United States Geological Survey (USGS) Beaverton, Oregon 7.5 quadrangle, 2020  
(viewer.nationalmap.gov/basic)

FIGURE  
1



Project #7521  
4/20/2023

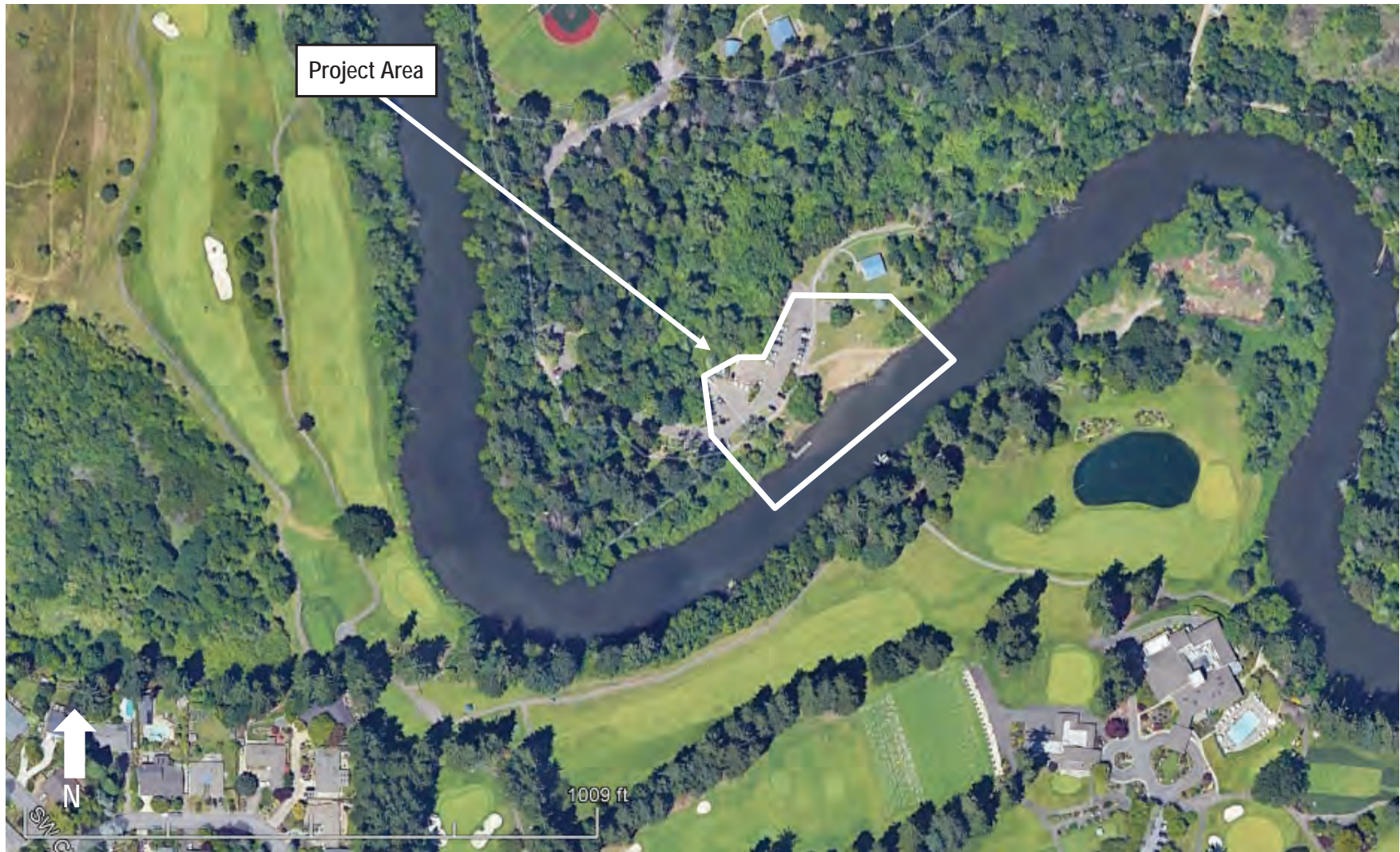


Pacific Habitat Services, Inc.  
9450 SW Commerce Circle, Suite 180  
Wilsonville, OR 97070

Tax Lot Map  
Cook Park Accessible River Access and Boarding Dock Replacement - Tigard, Oregon  
The Oregon Map (ormap.net)

FIGURE  
2





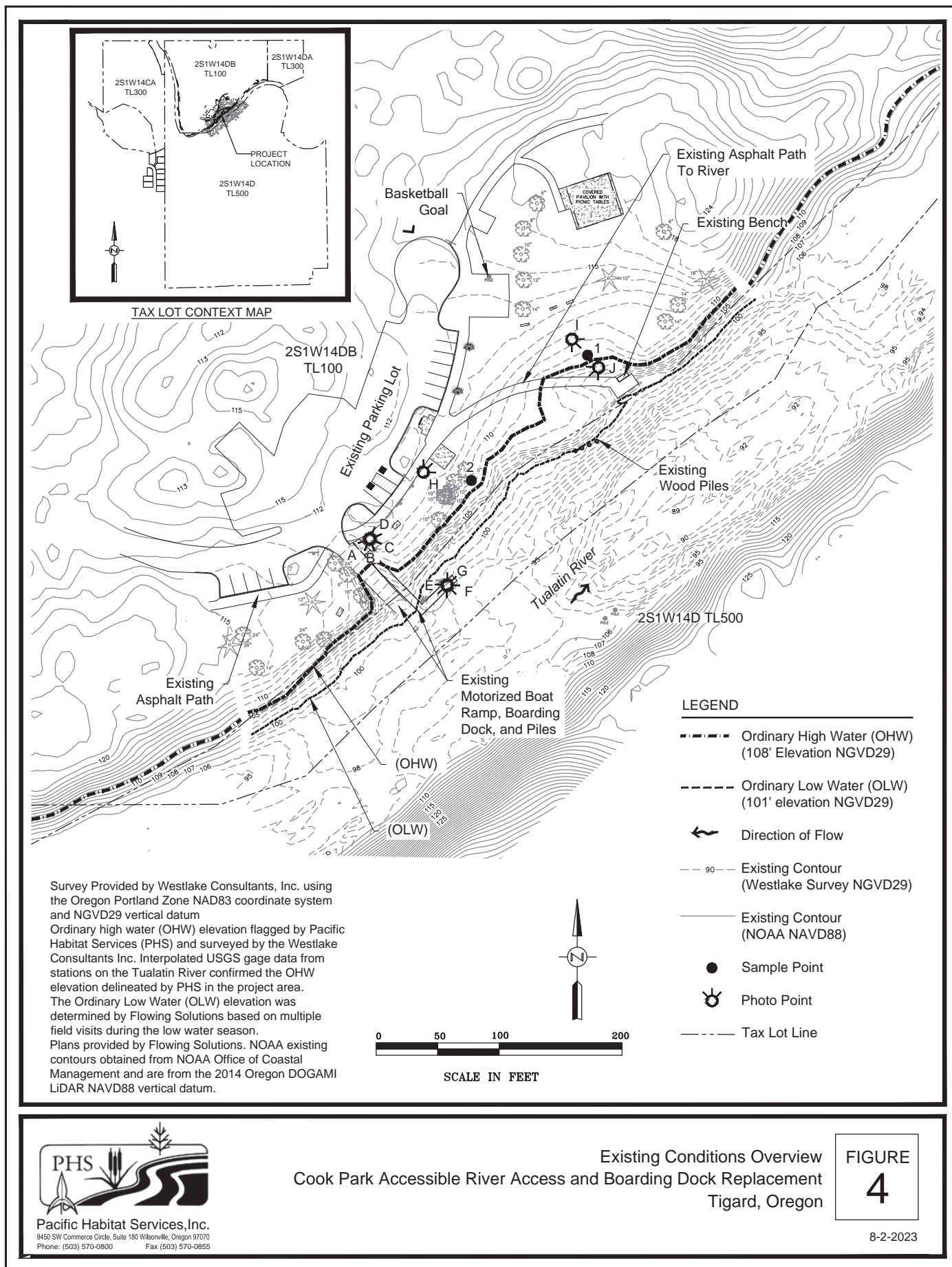
Project #7521  
4/20/2023



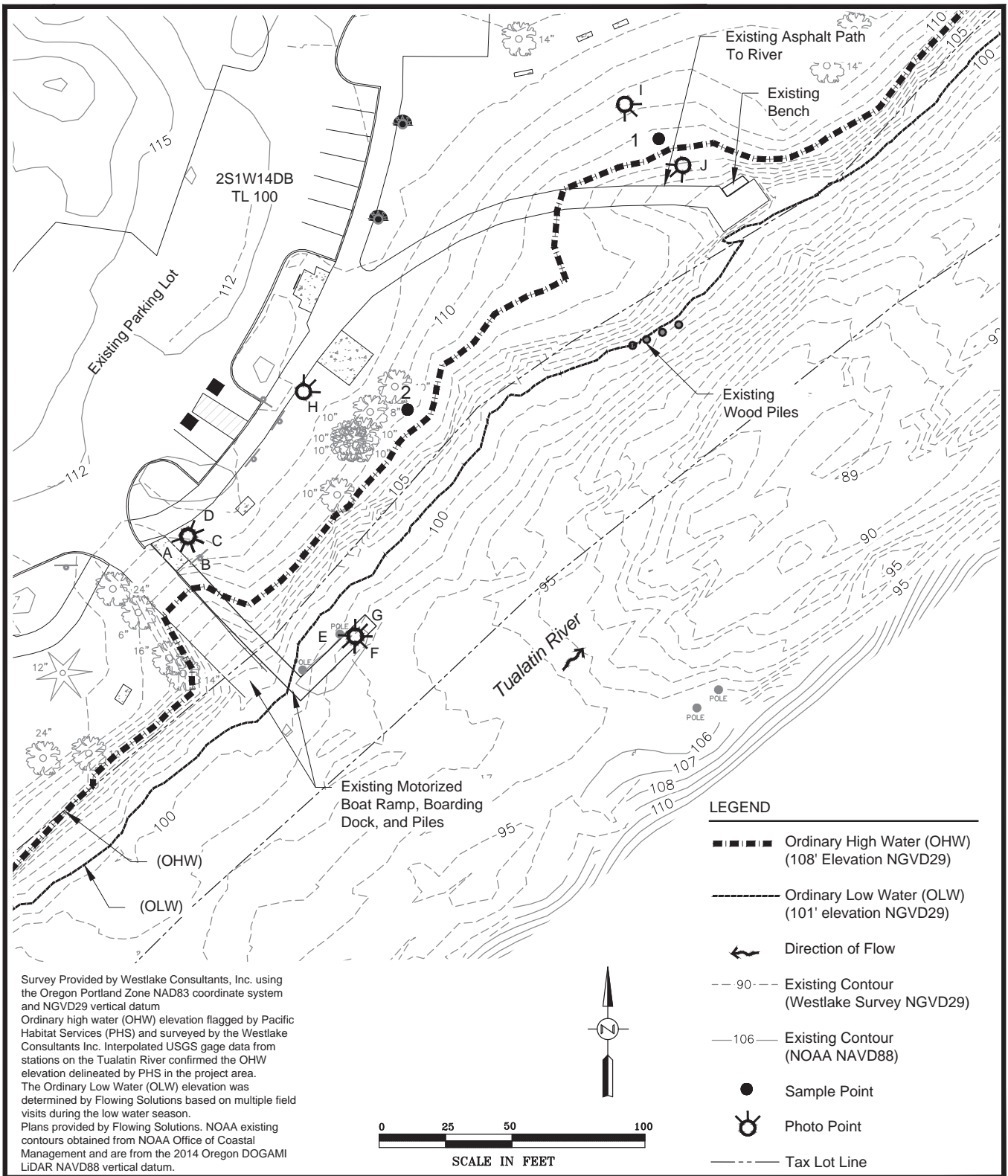
Pacific Habitat Services, Inc.  
9450 SW Commerce Circle, Suite 180  
Wilsonville, OR 97070

Aerial Photo (July, 2022)  
Cook Park Accessible River Access and Boarding Dock Replacement - Tigard, Oregon  
GoogleEarth, 2023

FIGURE  
3





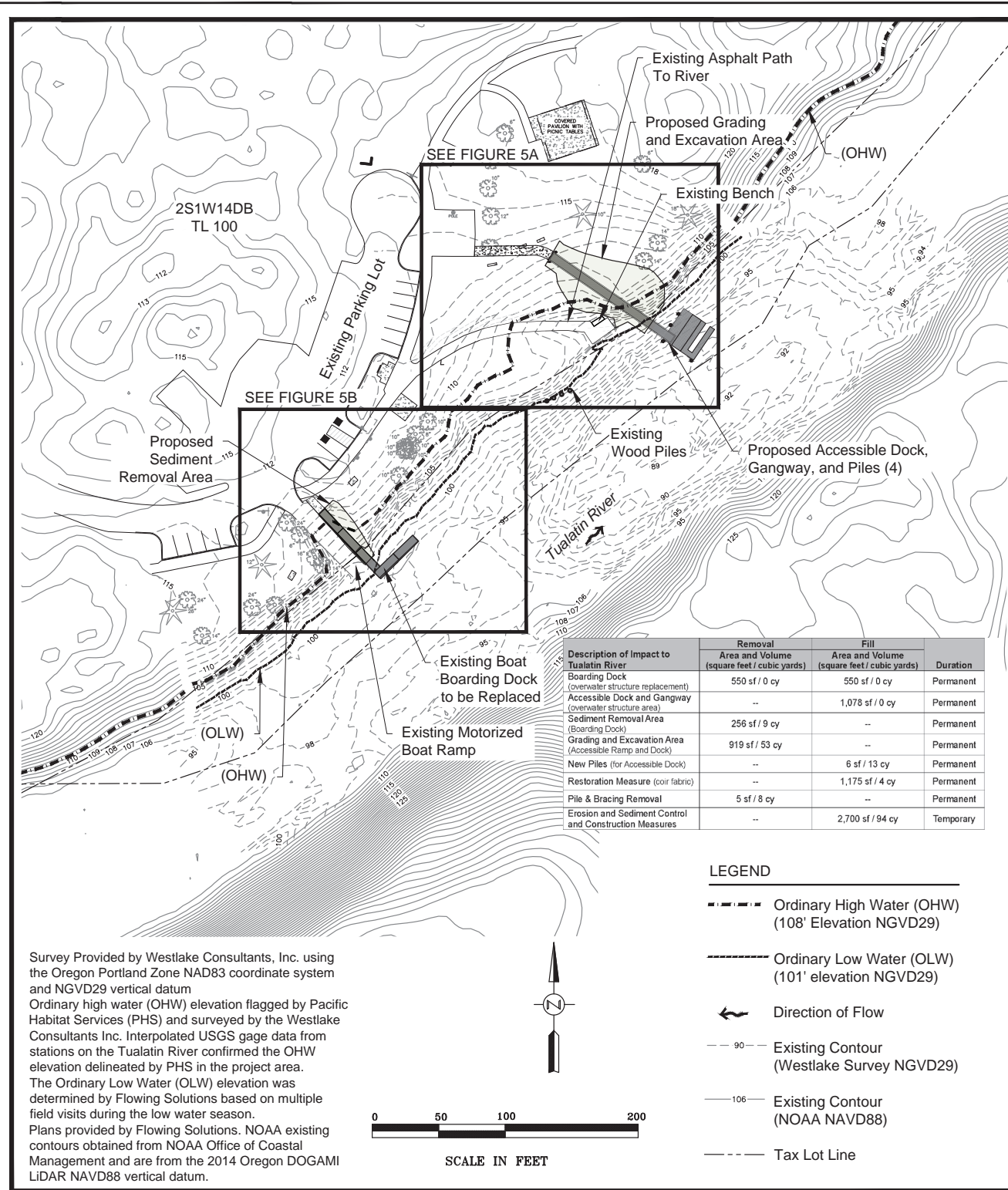


Pacific Habitat Services, Inc.  
9450 SW Commerce Circle, Suite 190 Wilsonville, Oregon 97070  
Phone: (503) 570-0800 Fax: (503) 570-0855

Existing Conditions  
Cook Park Accessible River Access and Boarding Dock Replacement  
Tigard, Oregon

**FIGURE**  
**4A**

8-2-2023

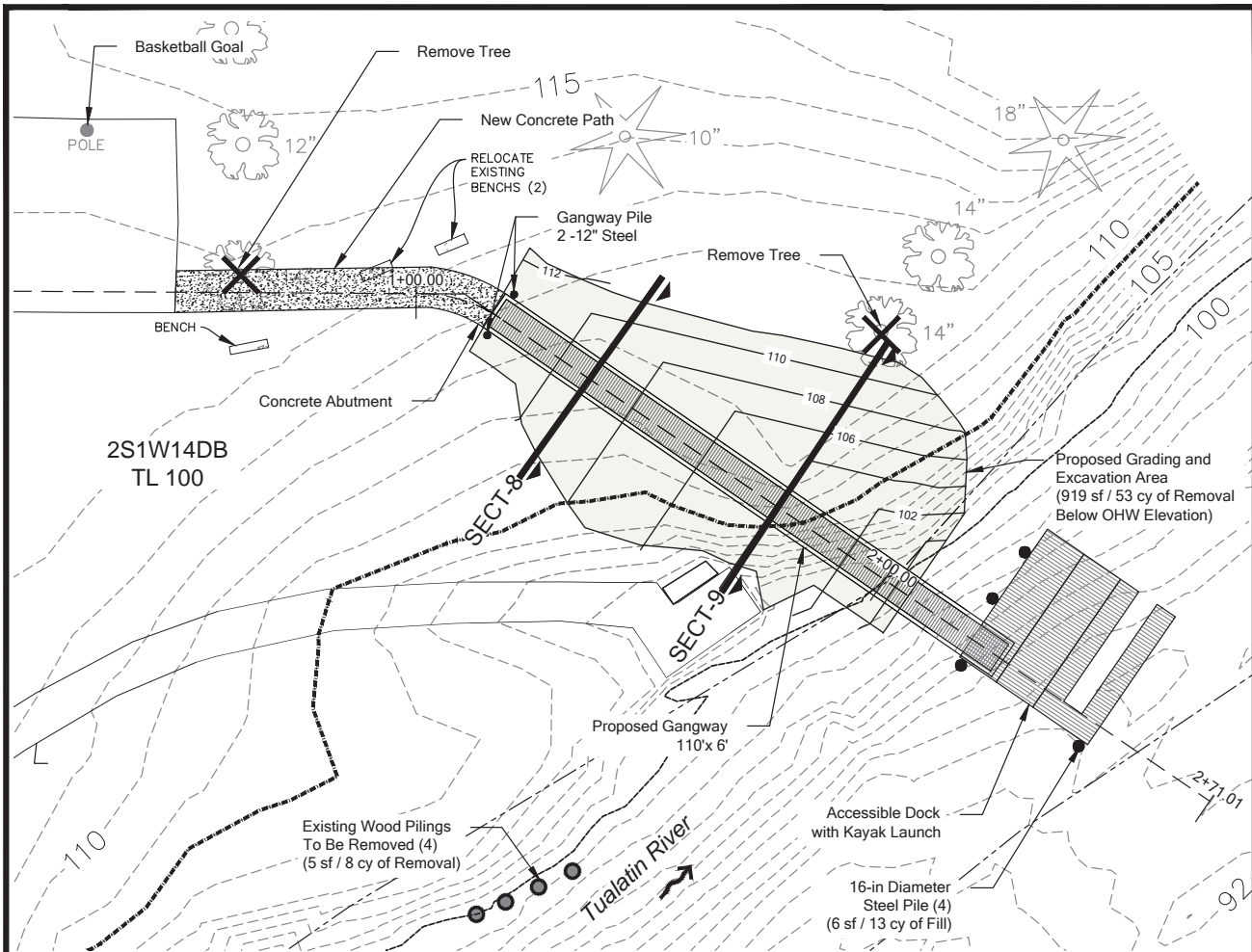


Pacific Habitat Services, Inc.  
 9450 SW Commerce Circle, Suite 180 Wilsonville, Oregon 97070  
 Phone: (503) 570-0800 Fax: (503) 570-0855

# Site Plan Overview and Sheet Index Cook Park Accessible River Access and Boarding Dock Replacement Tigard, Oregon

FIGURE  
**5**

8-2-2023



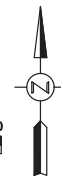
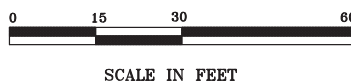
#### NOTES:

1. See Figure 6A-1 for Profile, Figure 6A-2 for Sections 8 and 9, and Figure 6A-3 for OSMB Kayak Dock Prototype Plan and Profile.
2. See Figure 7 for temporary impact areas and work areas

#### LEGEND

- ■ ■ ■ ■ Project Area Boundary
- ▨ Waters of the State/US
- Ordinary High Water (OHW) (108' Elevation NGVD29)
- Ordinary Low Water (OLW) (101' elevation NGVD29)
- ↖ Direction of Flow
- - - 90 - Existing Contour (Westlake Survey NGVD29)
- - - 106 - Proposed Contour
- - - Tax Lot Line

Survey Provided by Westlake Consultants, Inc. using the Oregon Portland Zone NAD83 coordinate system and NGVD29 vertical datum  
 Ordinary high water (OHW) elevation flagged by Pacific Habitat Services (PHS) and surveyed by the Westlake Consultants Inc. Interpolated USGS gage data from stations on the Tualatin River confirmed the OHW elevation delineated by PHS in the project area.  
 The Ordinary Low Water (OLW) elevation was determined by Flowing Solutions based on multiple field visits during the low water season.  
 Plans provided by Flowing Solutions. NOAA existing contours obtained from NOAA Office of Coastal Management and are from the 2014 Oregon DOGAMI LIDAR NAVD88 vertical datum.



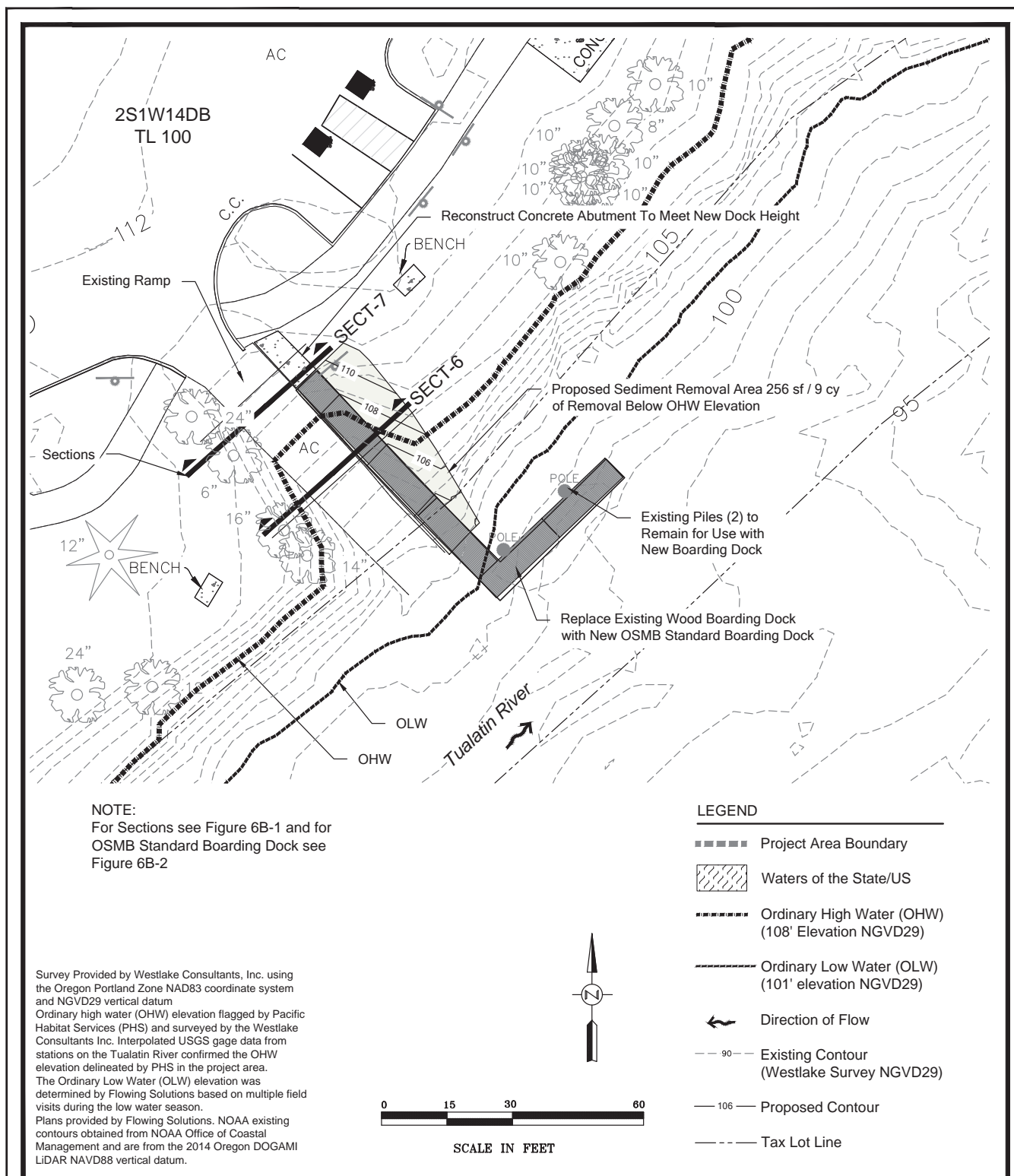
Pacific Habitat Services, Inc.  
 9490 SW Commerces Circle, Suite 180 Wilsonville, Oregon 97070  
 Phone: (503) 570-0800 Fax (503) 570-0855

Proposed Site Plan and Grading for Accessible Ramp and Dock  
 Cook Park Accessible River Access and Boarding Dock Replacement  
 Tigard, Oregon

FIGURE  
**5A**

8-2-2023





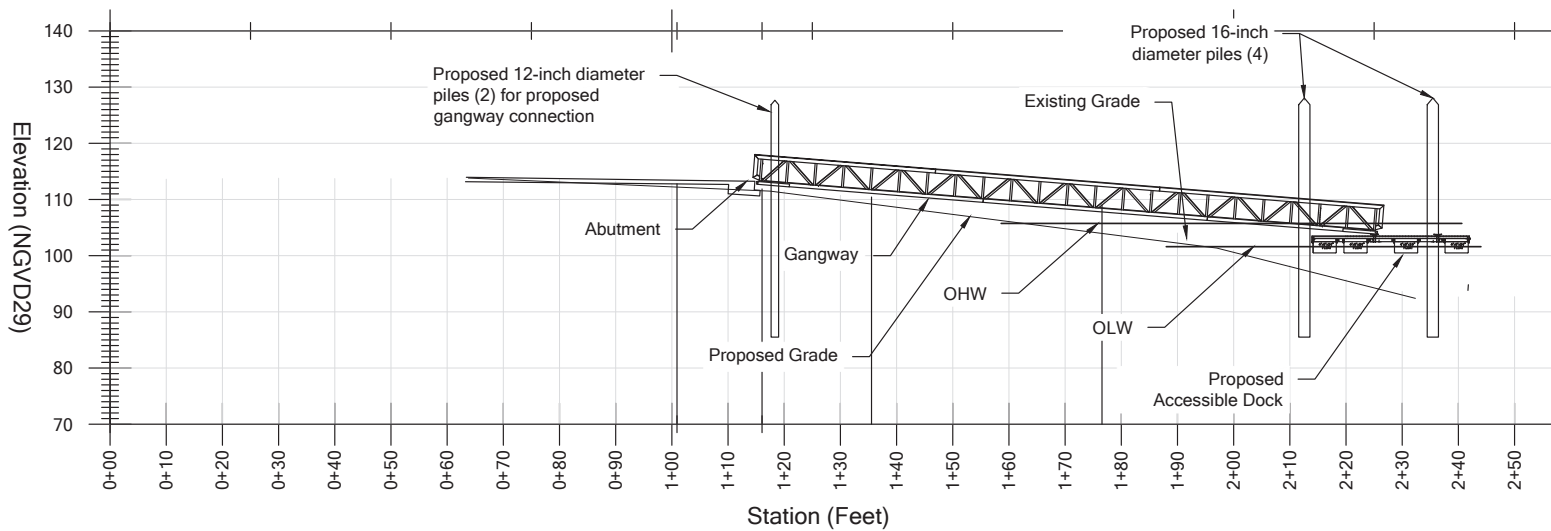
Pacific Habitat Services, Inc.  
9480 SW Commerce Circle, Suite 180 Wilsonville, Oregon 97070  
Phone: (503) 570-0800 Fax (503) 570-0855

# Boarding Dock Replacement and Sediment Removal Area Cook Park Accessible River Access and Boarding Dock Replacement Tigard, Oregon

FIGURE  
**5B**

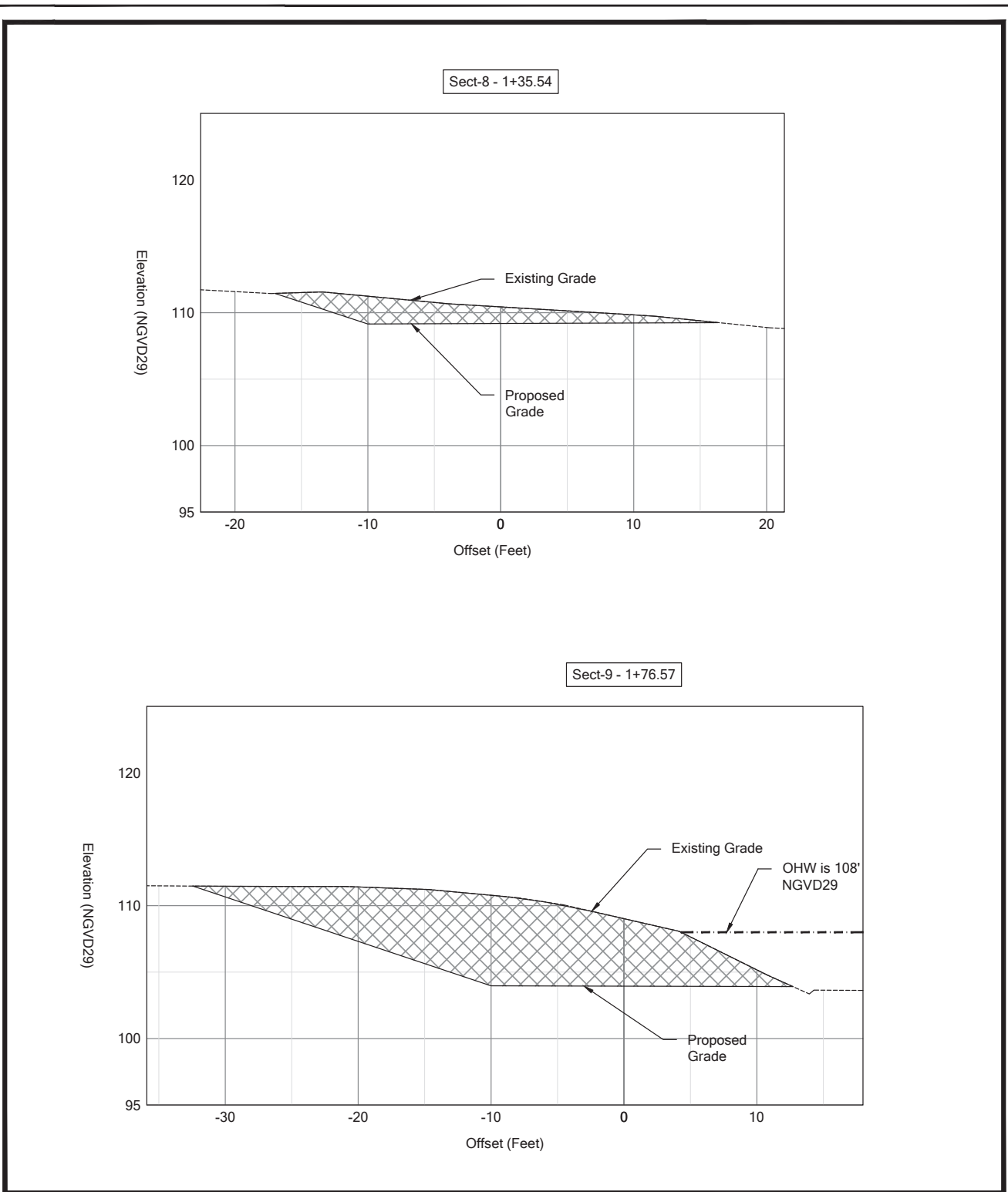
8-2-2023





Accessible Dock, Gangway, and Piles Profile  
 Cook Park Accessible River Access and Boarding Dock Replacement  
 Tigard, Oregon

FIGURE  
**6A-1**  
 4-20-2023



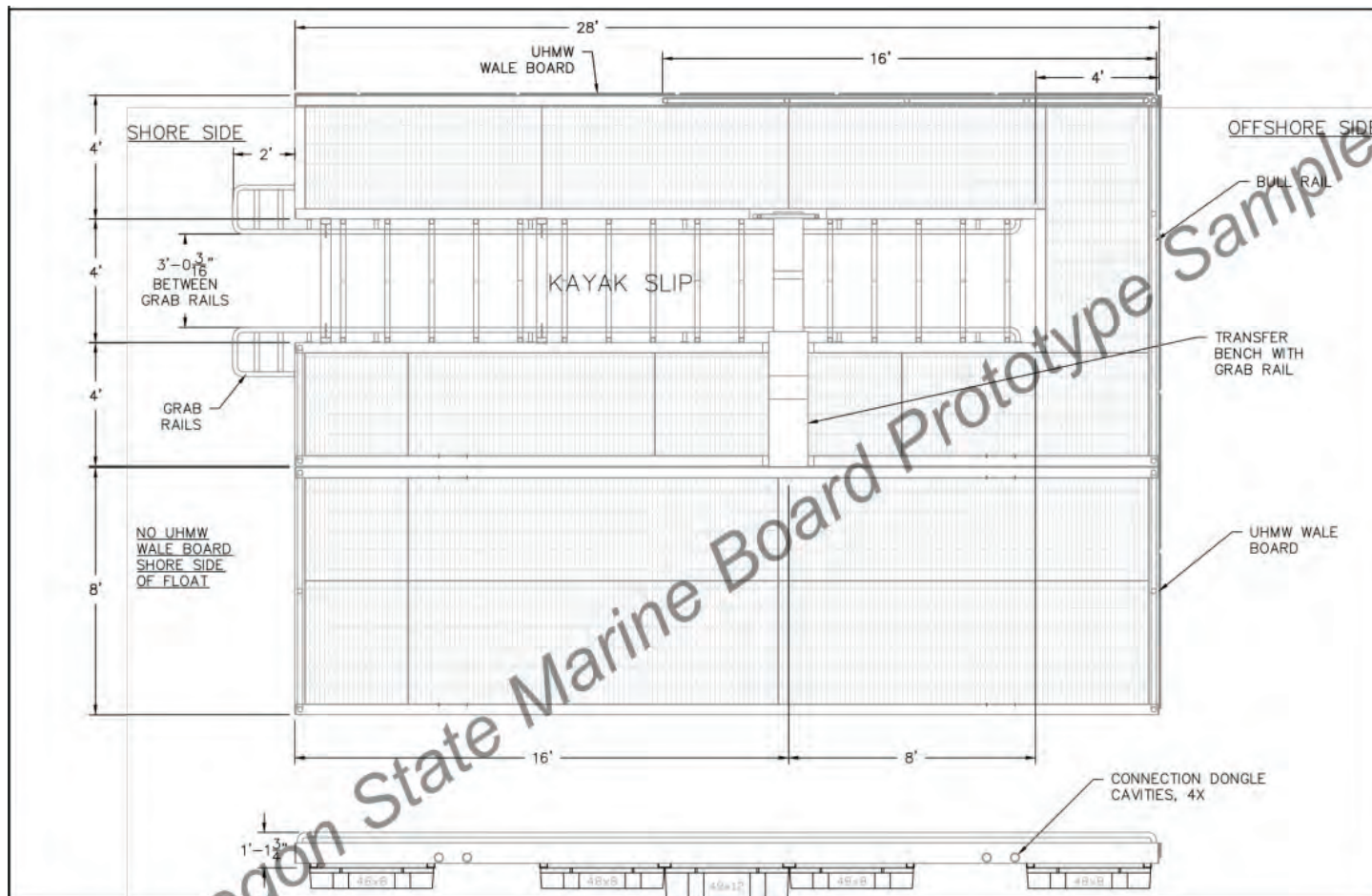
Pacific Habitat Services, Inc.  
 9450 SW Commerce Circle, Suite 180 Wilsonville, Oregon 97070  
 Phone: (503) 570-0800 Fax: (503) 570-0855

Accessible Ramp and Dock Bank Grading Area Sections  
 Cook Park Accessible River Access and Boarding Dock Replacement  
 Tigard, Oregon

FIGURE  
**6A-2**

8-1-2023





OSMB Kayak Dock Prototype  
Plan/Profile

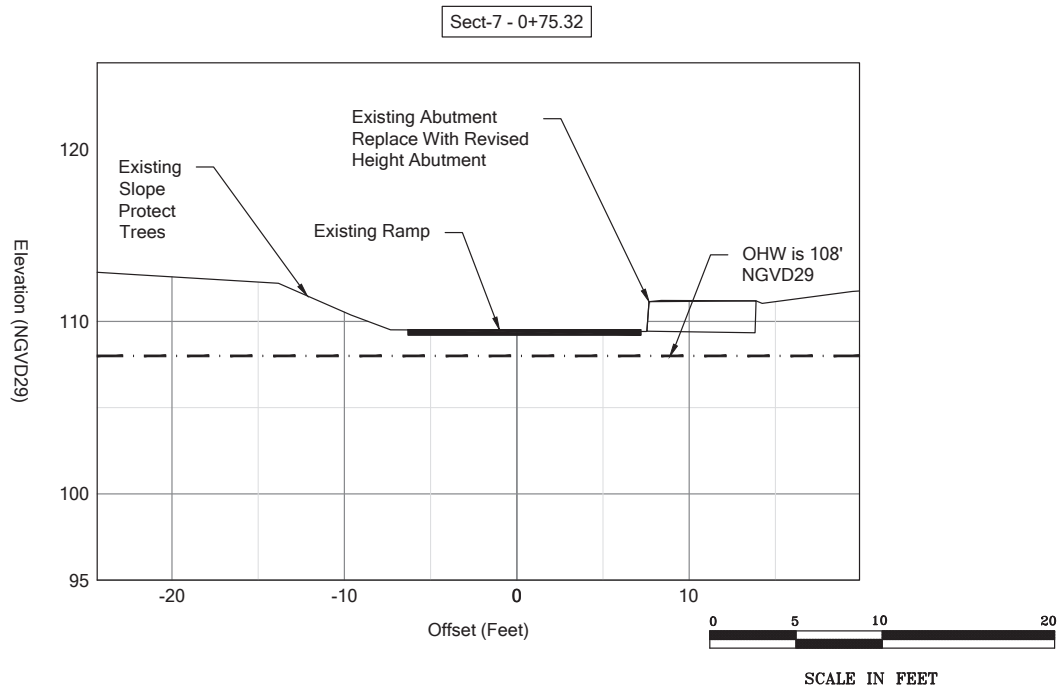
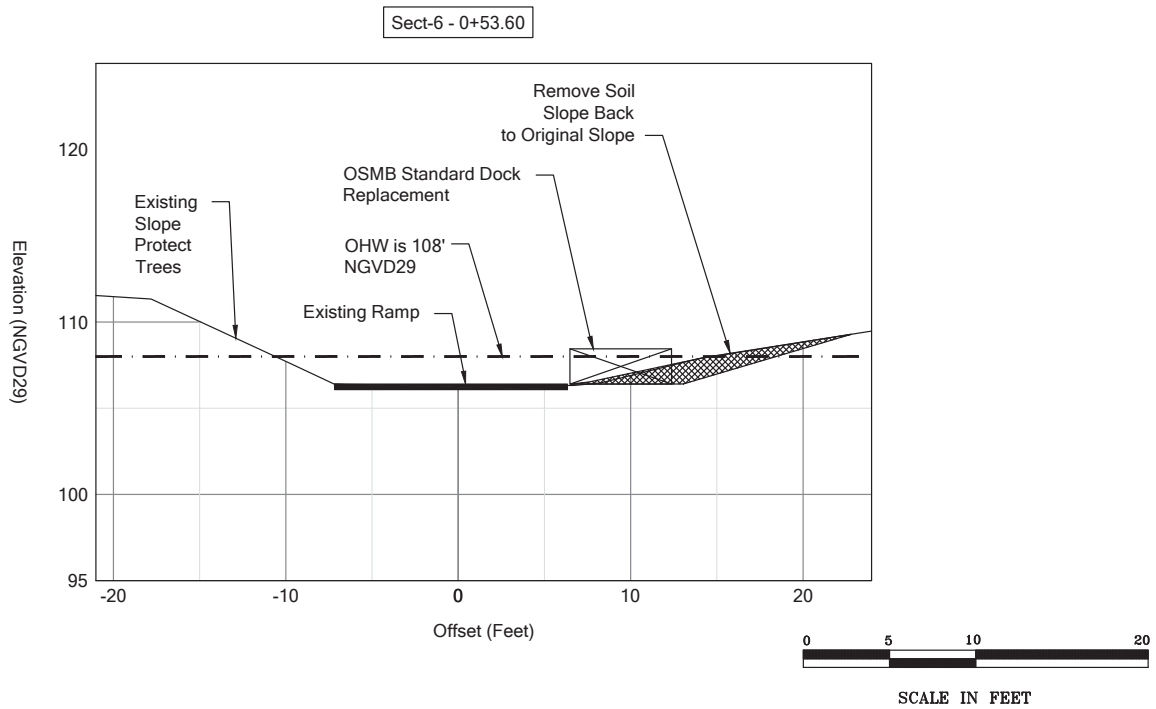
Project #7521  
4/20/2023



Pacific Habitat Services, Inc.  
9450 SW Commerce Circle, Suite 180  
Wilsonville, OR 97070

Oregon State Marine Board Kayak Dock Prototype  
Cook Park Accessible River Access and Boarding Dock Replacement - Tigard, Oregon

FIGURE  
**6A-3**



Pacific Habitat Services, Inc.  
9450 SW Commerce Circle, Suite 180 Wilsonville, Oregon 97070  
Phone: (503) 570-0800 Fax: (503) 570-0855

Standard Boarding Dock Sections  
Cook Park Accessible River Access and Boarding Dock Replacement  
Tigard, Oregon

**FIGURE  
6B-1**

8-2-2023









